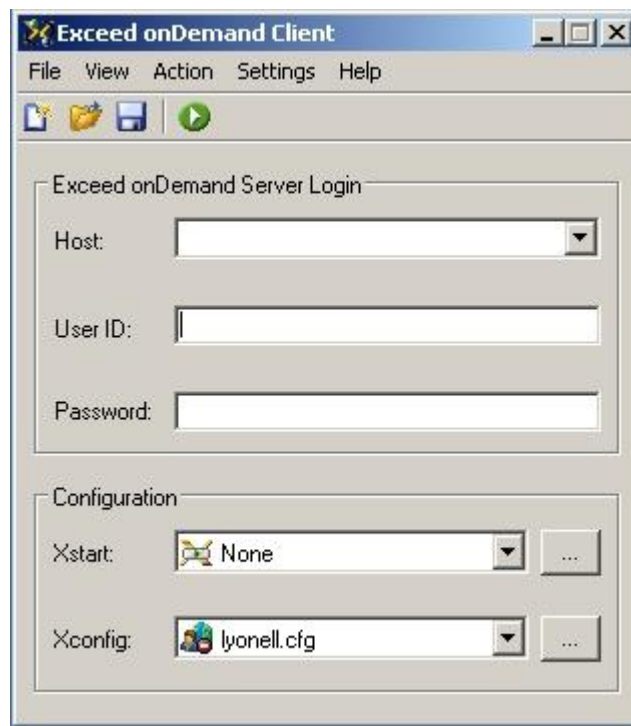


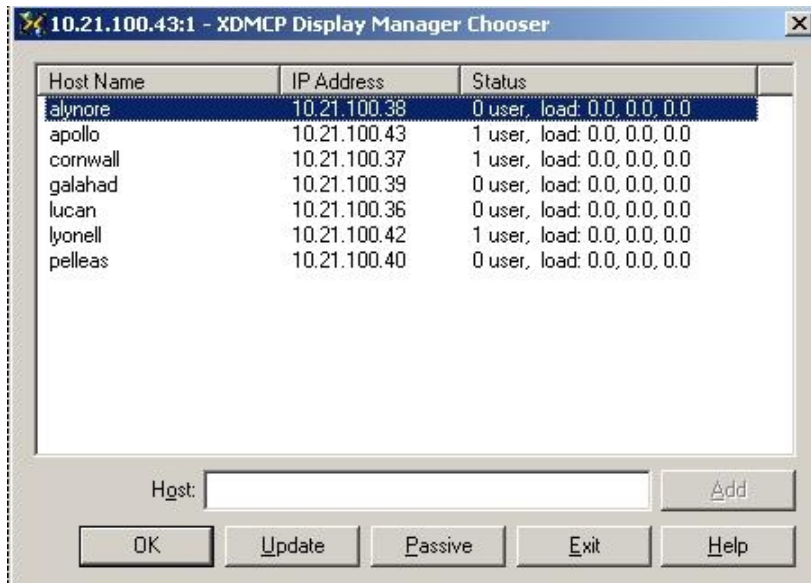
Instructions for connecting to the Sun Workstations Using the EOD Client.

1. The Exceed on Demand (EOD) client is installed on all lab work stations.
2. If you are working from home, the client can be downloaded and installed by clicking on the following link:
<http://mimage.hummingbird.com/evals/eod51/client/eod-client-5.1.exe>. During the installation, have the installer place an icon on your desktop for easy access. Also, the Cisco VPN utility must be running. This utility is available on the ISU Computer Held Desk website.
3. Double click on the **Exceed on Demand Client** icon on your desktop. The following dialog box will open:

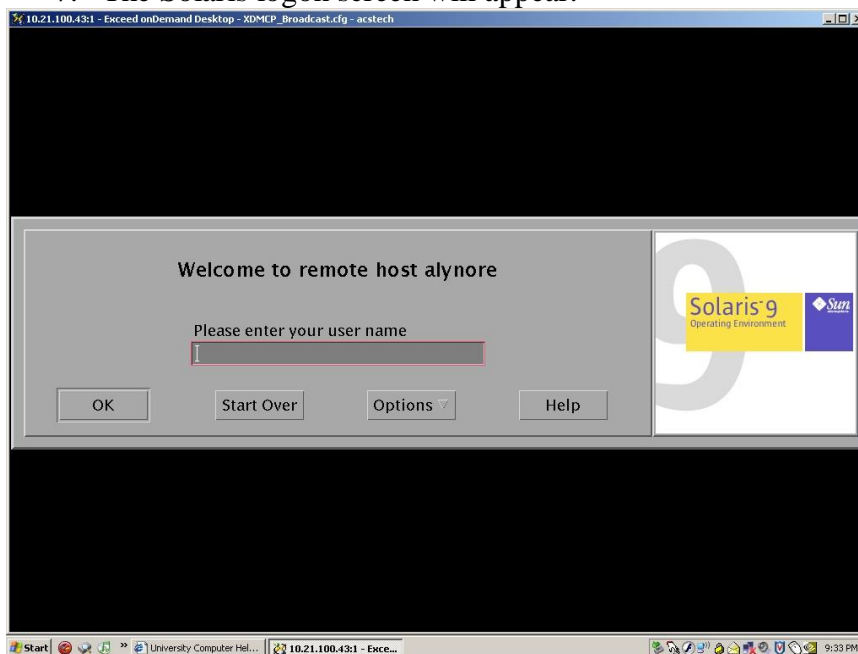


For host name enter **10.21.100.43**.

4. Enter your Sun credentials (User ID and Password) in the spaces provided. In the Xconfig selection box, choose “all available hosts” or choose one particular host from the list and then click on the green arrow at the top of the dialog box.
5. If you selected “all available hosts”, the following screen will be displayed. If you chose a particular host from the Xconfig list, the Solaris logon screen will be displayed.



6. Select one of the available hosts from the list. The status column shows the current load of each Sun workstation. A lower user count and load may result in a faster user experience. Once a host is selected click **OK**.
7. The Solaris logon screen will appear.



8. When finished you can either close your session by logging out or suspend your session by clicking on the top right hand corner of the EOD client screen. **Note:** Due to a limited number of simultaneous connections, do not suspend a session for more than a few hours.